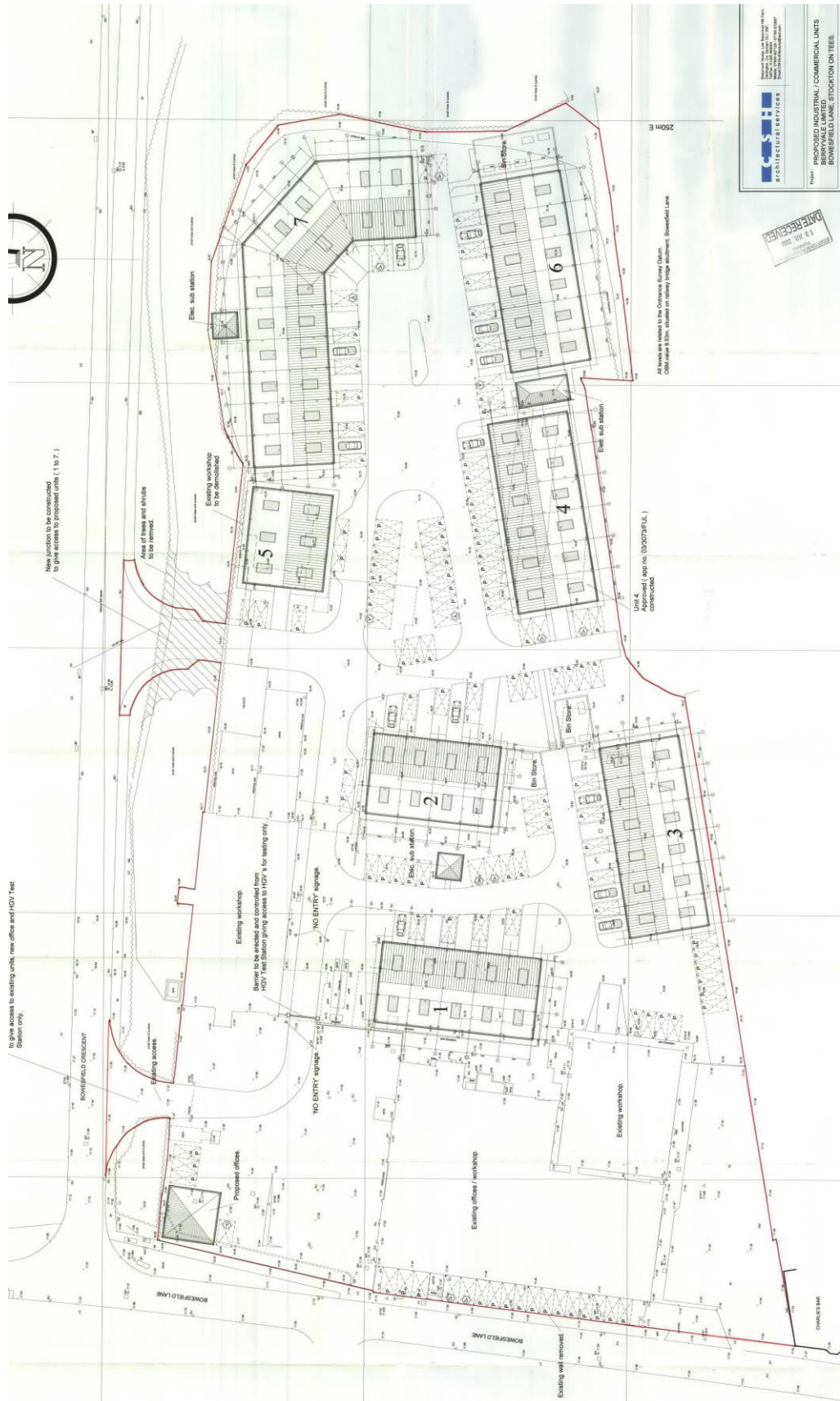


**Appendix Ref. 1. Site layout plan
06/2250/FUL**

Bowesfield Lane, Stockton On Tees, TS18 3HF

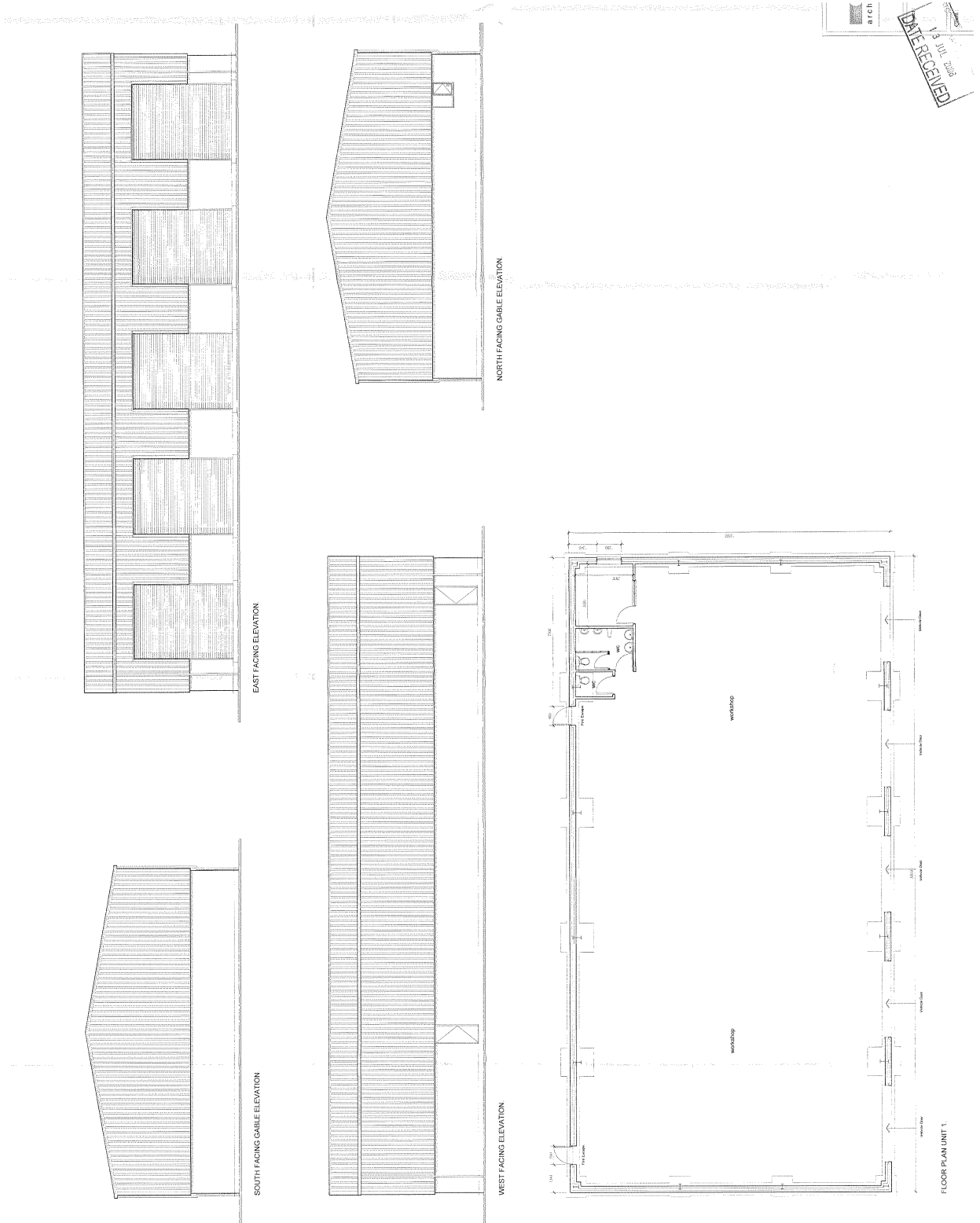
**Revised application for erection of 6 no. industrial/commercial units,
substation/switch rooms and office accommodation and associated car parking
together with new means of access.**



Appendix Ref. 2. Indicative building type
06/2250/FUL

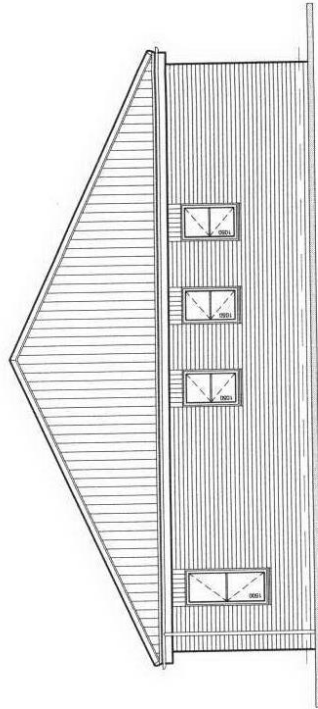
Bowesfield Lane, Stockton On Tees, TS18 3HF

Revised application for erection of 6 no. industrial/commercial units,
substation/switch rooms and office accommodation and associated car parking
together with new means of access.

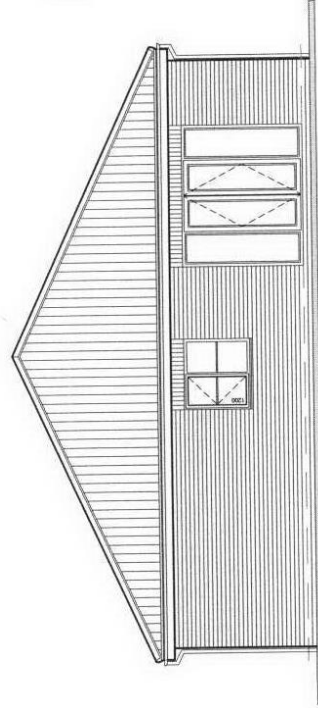


Revised application for erection of 6 no. industrial/commercial units,
substation/switch rooms and office accommodation and associated car parking
together with new means of access.

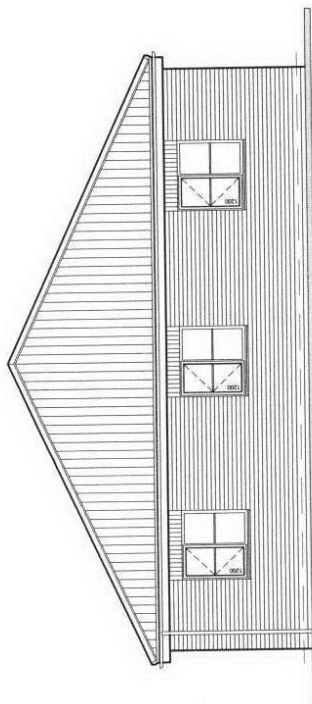
06



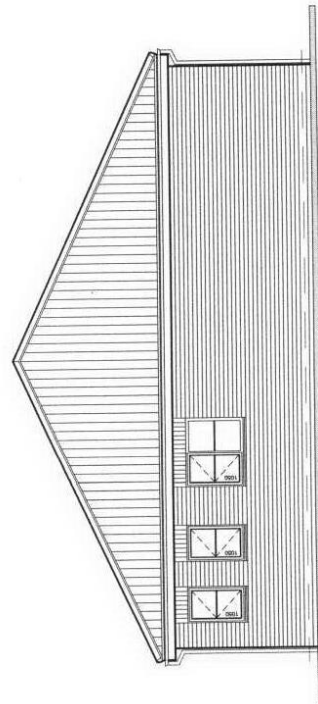
East Facing Elevation.



South Facing Elevation.



West Facing Elevation.



North Facing Elevation.